

### KOSTER KB-Flex 200 Sealing Paste

Permanently Elastic, Waterproofing Compound for waterproofing active leaks

Technical guideline / Article number 8.05

Issued: July 26, 2011

#### Description:

KOSTER KB-Flex 200 is a permanently plastic waterproofing compound for sealing pipe penetrations, cavities, etc., against moisture and/or pressurized water. It remains permanently pliable and adheres very well to dry or slightly moist substrates.

#### Purpose/Use:

KOSTER KB-Flex 200 is used to seal pipe or cable penetrations in below grade applications. Used for sealing potential leaks, active leaks, or pressurized water.

#### Substrate Preparation:

The substrate to receive KOSTER KB-Flex 200 may be dry, moist, or wet. The substrate must be free of grease, tar, or oil, as well as free of loose particles. Suitable substrates include: Concrete, masonry, mortar, plaster, and all other cementitious construction materials. KOSTER KB-Flex 200 will also bond to ceramic, PVC, polyethylene and polypropylene.

#### Technical Data:

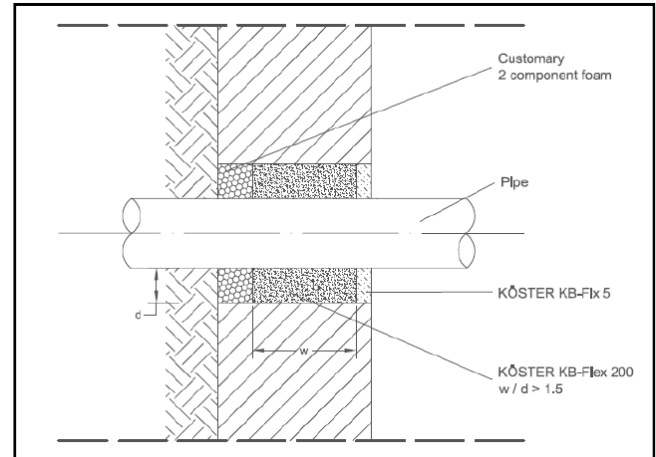
Material:	Polyolefin-Based
Color:	Gray
Density:	13.4 lb/gal
Heat resistance:	max. 122°F
Consistency:	Pasty, non-sagging
Application Temperature:	41°F -95°F
Substrate Temperature:	41°F -86°F

#### Application:

Prior to application, the cartridge containing KOSTER KB-Flex 200 is put into warm water and thus heated to approx. 86°F (30°C). This ensures that the material will have an optimal consistency for application. The penetration must be cleaned from the inside so that it is free of dust, sand, or other loose particles.

The waterproofing made of KOSTER KB-Flex 200 must be dimensioned so that ratio of the width (w) to the diameter (d) of the installed material is not below 1.5 to 1. The maximum diameter of the waterproofing is 11.8 inches (300 mm).

Before applying KOSTER KB-Flex 200, a securing block is installed in the penetration at a depth of 3.9 inches (10 cm) to allow the material to be built up during installation. The KOSTER KB-Flex 200 cartridge is then placed in the gun and the material is pressed into the penetration from back to front using the flexible nozzle so that the resulting layer thickness is at least 3.1 inches (8 cm).



After sealing cable penetrations jiggle the cables and press KOSTER KB-Flex 200 into potential voids created by the jiggling. Make sure that the cable is lying free of tension after finishing the sealing. Finally, the sealing compound, laying back approx. 0.4 inches (1 cm), is pressed in and smoothed with a metal spatula. As an additional safeguard, the mouth of the penetration is closed with KOSTER KB-Fix 5.

If a new cable is to be installed in this penetration later on, the KOSTER KB-Fix 5 plug must be removed first. After that, the (new) cable is pushed through the existing KOSTER KB-Flex 200. If necessary the penetration is resealed by pressing in additional KOSTER KB-Flex 200.

#### Coverage:

Approximately 13.35 lb/gal void (1.6 kg/l)

#### Cleaning of Tools:

Clean tools immediately after use with KOSTER Bitumen Remover.

#### Packaging:

30 oz (850g) cartridges; One box contains 20 cartridges.

#### Storage:

Store the material at room temperature (approx 68°F). When stored at room temperature the material may be stored for approx. 2 years.

#### Warranty:

KOSTER warrants that its product shall be in accordance with the specifications published in the current revision of the products data sheet.

KOSTER covenants that in the event any of its products fail to meet their published specifications, KOSTER shall replace those products proved to be defective. KOSTER shall not be responsible for any incidental or consequential damages due to the breach of its warranties. Notwithstanding the foregoing, KOSTER's sole liability hereunder shall not exceed the cost of the defective product originally purchased. EXCEPT AS SET FORTH ABOVE, KOSTER MAKES NO OTHER WARRANTIES EXPRESS OR IMPLIED AND MAKES NO WARRANTY AS TO THE MERCHANTABILITY OR FITNESS OF THE PRODUCT FOR A PARTICULAR PURPOSE. THERE ARE NO WARRANTIES WHICH EXTEND BEYOND THE DESCRIPTION ON THE FACE HEREOF. The user must determine if the product is suited for the intended use and the user must bear the risks and liabilities associated with it.